

2

1

3/16 ALU MILL
CHAIN HANGER BACKING PLATE
#P0043

NUT - NYLON LOCK - 3/8-16

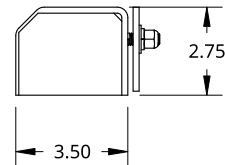
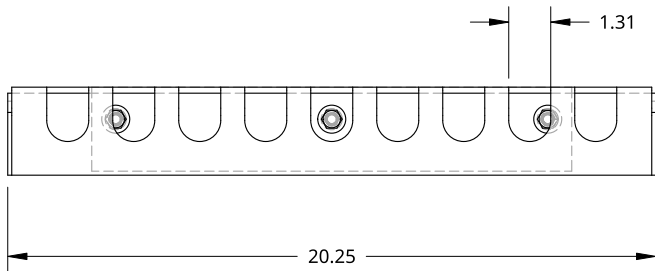
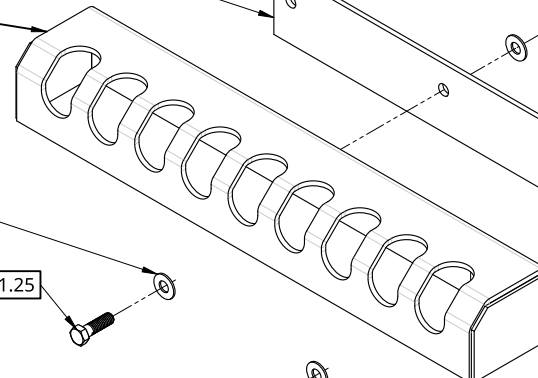
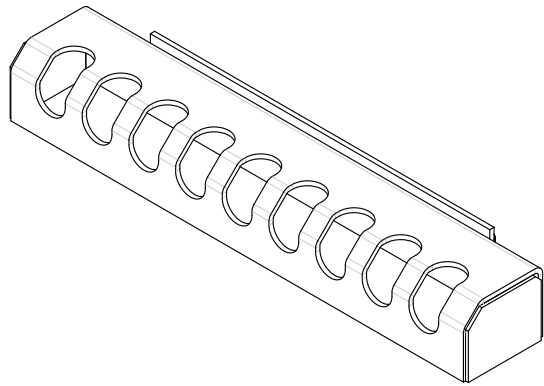
WASHER - LOCK - 3/8

WASHER - FLAT - 3/8

CHANGE HANGER

WASHER - FLAT - 3/8

BOLT - HEX HEAD - 3/8-16 X 1.25



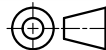
THIS DOCUMENT IS THE PROPERTY OF TREBOR
MANUFACTURING. ANY UNAUTHORIZED REPRODUCTION
WILL BE PROSECUTED TO THE FULL EXTENT OF THE LAW



UNLESS OTHERWISE SPECIFIED,
DIMENSIONS ARE IN INCHES

.XX = ±.1-
.XXX = ±.015-
.XXXX = ±.005-
ANGULAR = ±1°
FRACTIONAL = ±1/8

THIRD ANGLE PROJECTION



MATERIAL

ALUMINUM

PART NO. TR146SP
REV. D

CAB SHIELD CHAIN HANGER W/NO LID AND 9 HOLES FOR 1/2IN CHAIN
- 20IN WIDE

SIZE A DWG. NO. D7898
REV. B

SCALE 1:6 WEIGHT 3.59 LB SHEET 1 of 1

2

1

B

B

A

A