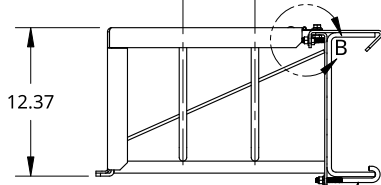
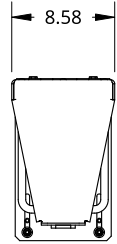
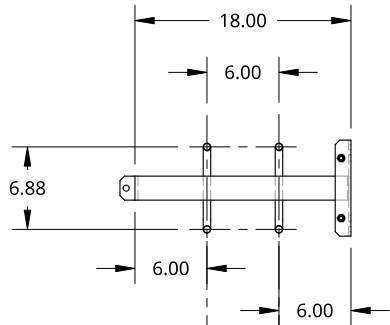
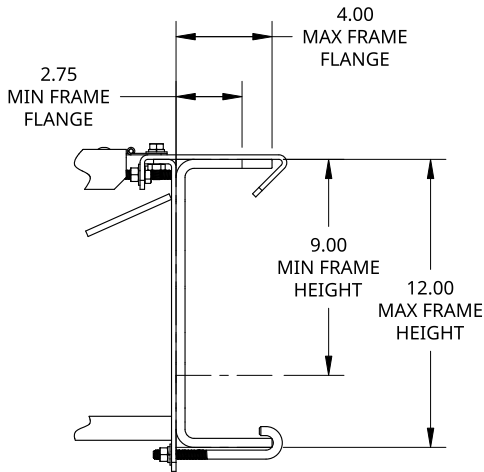


2

1

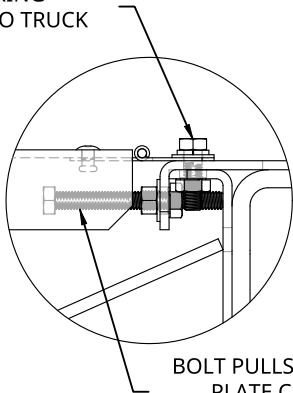


"J" BOLTS CLAMP BOTTOM OF UNIT TO TRUCK FRAME



SCALE 1:8

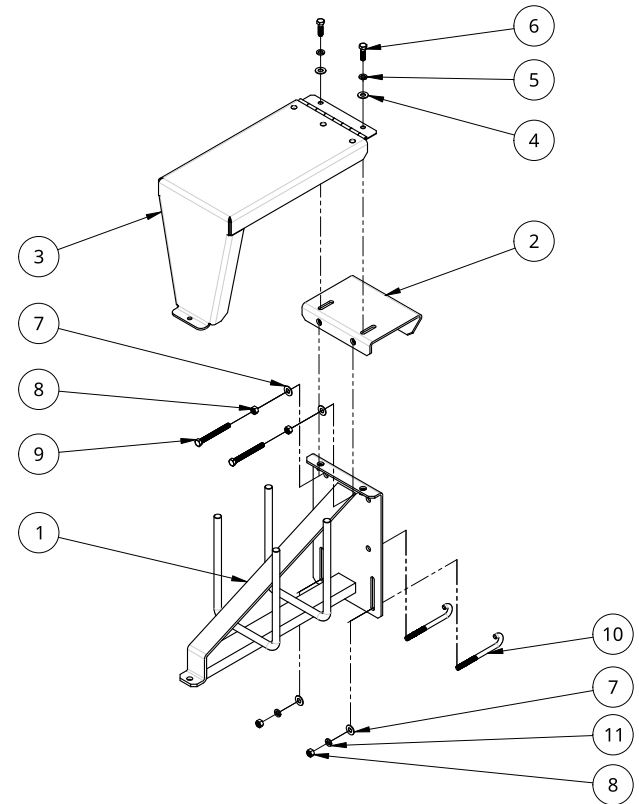
CUSTOMER WILL NEED TO REMOVE LID DURING INSTALLATION TO TRUCK FRAME



DETAIL B
SCALE 1:4

BOLT PULLS BACK ON CLAMP PLATE CLAMPING TOP OF UNIT TO TRUCK FRAME

ITM	PART NUMBER	QTY	UOM	DESCRIPTION	MATERIAL
1	A15311	1	EACH	HANGER BRACKET - 18IN WITH X4 HANGERS	STEEL PAINTED BLACK
2	A15191	1	EACH	TOP MOUNTING HOOK PLATE	STEEL PAINTED BLACK
3	A15312	1	EACH	LID WITH INSTALLED HINGE	1/8 ALU CHECKER
4	000244	2	EACH	WASHER - FLAT - 3/8	STAINLESS STEEL
5	000260	2	EACH	WASHER - LOCK - 3/8	STAINLESS STEEL
6	000044	2	EACH	BOLT - HEX HEAD - 3/8-16 X 1.25	STAINLESS STEEL
7	000243	4	EACH	WASHER - FLAT - 3/8	STEEL ZINC PLATED
8	000221	4	EACH	NUT - REGULAR - 3/8-16	STEEL ZINC PLATED
9	24D4B469	2	EACH	BOLT - HEX HEAD - 3/8-16 X 3.5	STEEL ZINC PLATED
10	8448E2AE	2	EACH	J-BOLT - 3/8-16 X 5 X 2.25 THREAD LENGTH	STEEL ZINC PLATED
11	000259	2	EACH	WASHER - LOCK - 3/8	STEEL ZINC PLATED

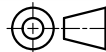


THIS DOCUMENT IS THE PROPERTY OF TREBOR MANUFACTURING. ANY UNAUTHORIZED REPRODUCTION WILL BE PROSECUTED TO THE FULL EXTENT OF THE LAW

UNLESS OTHERWISE SPECIFIED, DIMENSIONS ARE IN INCHES

.XX = ±.1-
.XXX = ±.015- ANGULAR = ±1°
.XXXX = ±.005- FRACTIONAL = ±1/8

THIRD ANGLE PROJECTION



DRAWN SHAWN CROCKER 03/31/2022

MATERIAL

PART NO. **TRCHAINCARRI8** REV. **A**

TIRE CHAIN CARRIER WITH CLAMP ON BRACKET - 18IN WITH X4 HANGERS

SIZE **A** DWG NO. **D17375** REV. **A**

SCALE 1:16 WEIGHT 25.9 SHEET 1 of 1

2

1