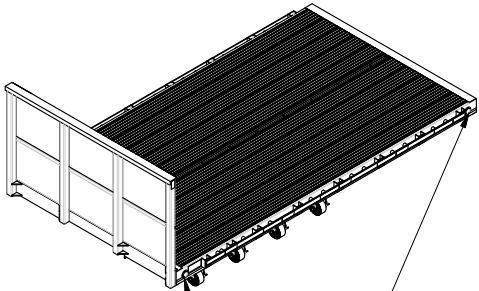
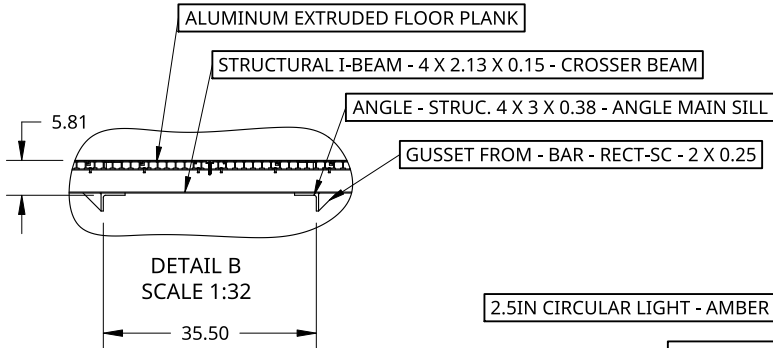
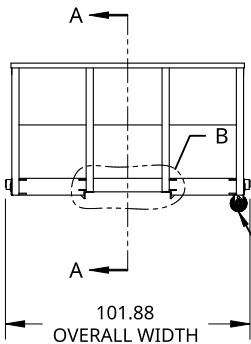


SPECIFICATIONS	
OVERALL LENGTH	180.00 IN
OVERALL WIDTH	101.88 IN
HEADBOARD HEIGHT	48.00 IN
MAIN SILL TYPE	3 X 4 X 0.38 ANGLE SILL
MAIN SILL SPREAD	35.5IN (INSIDE ANGLE)
DRIVERS SIDE WINCHES WITH 3IN STRAPS 5400LB WLL.	X4
2.5IN LED CLEARANCE LIGHTS IN FOUR CORNERS	

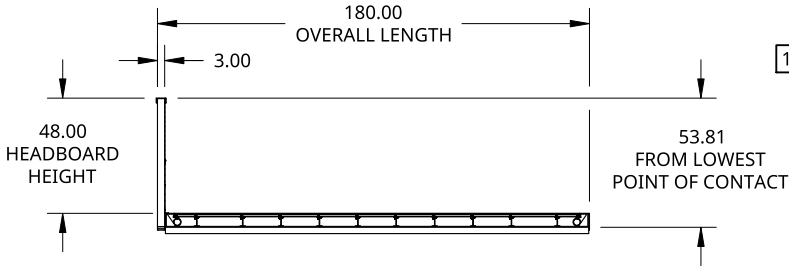


2.5IN CIRCULAR LIGHT - AMBER LENSE AND LIGHT - UNSEALED 2-WIRE PLUG

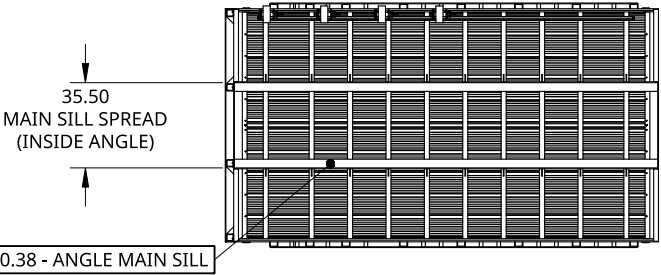
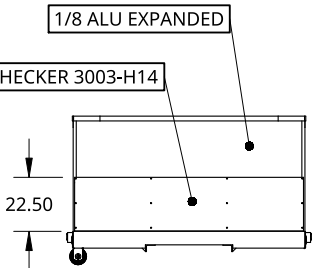
2.5IN CIRCULAR LIGHT - RED LENSE AND LIGHT - UNSEALED 2-WIRE PLUG



X4 WINCHES AND STRAPS
ON DRIVERS SIDE



SECTION A - A



ANGLE - STRUC. 4 X 3 X 0.38 - ANGLE MAIN SILL

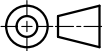
THIS DOCUMENT IS THE PROPERTY OF TREBOR
MANUFACTURING. ANY UNAUTHORIZED REPRODUCTION
WILL BE PROSECUTED TO THE FULL EXTENT OF THE LAW

UNLESS OTHERWISE SPECIFIED,
DIMENSIONS ARE IN INCHES

.XX = ±.1-
.XXX = ±.015-
.XXXX = ±.005-

ANGULAR = ±1°
FRACTIONAL = ±1/8

THIRD ANGLE PROJECTION



DRAWN BY SHAWN CROCKER 11/01/2022
CHANGED BY SHAWN CROCKER 11/03/2022

MATERIAL

ALU 6061-T6

PART NO.

PFAGL15

REV.

A

FLAT DECK TRUCK BODY WITH POCKETS AND ANGLE MAIN SILL - 180IN
LONG OVERALL X 102IN WIDE - 48IN HIGH HEADBOARD - X4 WINCHES
AND STRAPS ON DRIVERS SIDE

SIZE

A

DWG NO.

D23021

REV.

A

SCALE 1:80

WEIGHT

1097.12 LB

SHEET

1 of 1